

# Dallas County Coalition

## Minutes

Lutheran Church of Hope Waukee

305 N.E. Dartmoor, Waukee, Iowa 50263

Wednesday October 23, 2019 – 10:30am -12:00pm

### Attendance and Introductions

Val Cameron (Dallas County ISU Extension), Abigail Akers (CIAC), Nicole Kinkennon-Bettis (CIAC), Hannah VaderKospa (CIAC), Dena Owens (Providence Place), Peg Ragner (YSS), Nate Stephens (YSS), Dawn Walton (ZION Recovery Services), Hannah Rivas (EveryStep), Amy Karaidos (EveryStep), Joy Greer (The Family Connection), Jenny Felt (Boone/Dallas DCAT/CPPC), Christy Wellendorf (Westview Church Preschool), Alicia King (YMCA Early Learning Center), Dawn Holt (LSI) and Debb Franz (Restorative Justice/Juvenile Court Services)

### Agency Sharing –

Jenny

- Boone/Dallas CPPC Mental Health Awareness Training with NAMI mini-presentations on November 26, 2019 at the Dallas County Human Services Campus (email will be sent out with more info/registration)
- Boone/Dallas Decat/CPPC's Annual Mental Health Conference will be April 08, 2020 at the Cobblestone Inn in Boone (email will be sent out with more info/registration closer to the event)

Dawn (ZION)/Debb

- National Take Back Initiative Collection (semi-annual) – October 26, 2019 from 10:00am-2:00pm
  - Waukee Police Department and Perry Police Department
- Locations accepting prescriptions drop-off year round
  - Adel HealthMart (Adel), HyVee (Waukee Perry, and West Des Moines), HyVee Drugstore (West Des Moines), HyVee HealthMarket (West Des Moines), Dallas County Sheriff's Office (Adel)

Debb

- Hunger Free Dallas County Food Pantries {flyer}
- Hunger Free Dallas County Mobile Pantries for Nov/Dec 2019 {flyer}
- The Kids' Clothes Closet in Adel {flyer}
- Dallas County Closet in Waukee for October {flyer}
- PFD's Learn and Playgroup in Waukee {flyer}
- HIRTA's free rides to Perry Food Pantry in Perry {flyer}
- Dallas County Sherriff's Office Benevolent Association's Food Basket and Shop With A Cop {flyer}
- Dallas County Public Health's Community Needs Assessment survey/workshop {flyer}

### Early Childhood Updates/Information

Dena:

- 4RKids Board update – Still have two Board Members positions open, contact Deb S. for info/application
- Lunch-and-Learn – "Preparing for the Legislative Session" on December 17, 2019 from 12:00pm-1:00pm. located at Wells Fargo in Indianola. RSVP to Deb S. {flyer}

Val:

- Dallas County ISU Extension – 4RKids Preschool Enrichment Project Overview
  - Family Support Coordinated Intake Model {handout}
  - Preschool Enrichment Project Model {handout}
  - Preschool Enrichment Project FY20 update {handout}

Dena/Debb

- Cost of Living in Iowa through The Iowa Policy Project and Iowa Adolescent Health Profile for Dallas County through Iowa Department of Public Health {handouts}



# Dallas County Coalition

## Dallas County Children's Advocacy Council Updates/Information

Joy

- FY 20 Program and Budget update – monthly GAXs are approved
- FY 21 Planning – around January for RFP to be released

Dena/Joy/Hannah/Debb

- PCAIA funding conference call –
  - On the phone call: Dena, Deb, Hannah R, Joy, Sheena (PFD), Shannon (CIAC), Gina (CIAC) and Debb
  - CIAC is planning to reapply for Sexual Abuse Prevention funds to continue agency programming (Second Step and Nurturing Healthy Sexual Development)
  - PFD will apply for Community Development funds to continue agency programming (24/7 Dads, Learn & Playgroup and Parent Café)

Dena/Joy/Hannah/Debb

- PCAIA Regional Meeting (Johnston) –
  - Attendance: Vale, Deb, Hannah V and Debb
  - Child Abuse by County 2018 statistics
  - Ambiguous information regarding upcoming RFP details/alluded to possibly amount of funding awarded due to each county's risk factors

## Generation Wellness Update/Information

Dena

- ACEs Presentations – Dallas Center-Grimes CSD (Parent University) on October 24, 2019 and Waukee CSD (South Middle School) on November 18, 2019
  - ACEs/Connections Matter presentations purpose –
    - Inform/advise the communities in Dallas County regarding hope and resilience
    - To network with agencies, organizations and community members

Debb

- Will contact NAMI to get information on what the steps are to possibly have a NAMI Chapter in Dallas County

Dena

- Generation Wellness Sub-Committee on November 13, 2019 at 9:30am-11:30am (approx.) at 3rd Place, Adel (all are welcome to attend)

**Next meeting: February 26, 2020 at 10:30am**

Dallas County Coalitions led by Dena Owens and Debb Franz in the absence of Deb Schrader  
Respectfully submitted by Debb Franz

Acronyms used above:

Adverse Childhood Experience Study (ACEs)  
Crisis Intervention & Advocacy Center (CIAC)  
General Accounting Expenditure (GAX)  
Heart of Iowa Regional Transit Agency (HIRTA)  
Lutheran Services in Iowa (LSI)  
National Alliance of Mental Illness (NAMI)  
Partners in Family Development (PFD)  
Prevent Child Abuse Iowa (PCAIA)  
Request For Proposal (RFP)



# HUNGER FREE DALLAS COUNTY

Ensuring everyone has  
access to quality food  
and resources to meet  
basic needs.

Hungry? Need assistance with food?  
Visit one of these food pantries in Dallas County.

## ADEL

Adel Good Samaritan Food Pantry  
215 N 11th St, Adel  
(515) 423-0753  
*Serves:* Adel, DeSoto, Minburn and Van  
Meter school districts  
*Open:* Monday & Tuesday 12-2 PM

## DALLAS CENTER

Dallas Center Food Pantry  
Dallas Center United Methodist Church  
1501 Walnut St, Dallas Center  
(515) 478-6744  
*Serves:* DC-G School District & Dallas County  
*Open:* Tuesday 4-6 PM

## DEXTER

Dexter Rural Neighbors Project  
Presbyterian Church  
823 State St, Dexter  
(515) 789-4538  
*Serves:* No residency restrictions.  
Call to make an appointment.

## GRANGER

Emmanuel United Methodist Church  
1910 Locust St, Granger  
(515) 999-2215  
*Serves:* Woodward Granger school district.  
*Open:* Monday - Thursday, 8:30 AM-4 PM &  
by appointment.

## GRIMES

Grimes Community Food Pantry  
Grimes United Methodist Church  
801 W.1st St, Grimes  
(515) 986-9765  
*Serves:* Grimes  
By appointment Tuesday & Thursday,  
9 AM-3 PM

## PERRY

Perry Area Food Pantry  
3000 Willis Ave, Perry  
(515) 465-5185  
*Serves:* Perry Area School District  
*Open:* Tuesday 10 AM-12:30 PM &  
Thursday 1-3:30 PM

## STUART

Cottage Pantry  
117 N Sherman St, Stuart  
(515) 523-1350  
*Serves:* Stuart, Redfield, Dexter, Menlo  
*Open:* Wednesday 1:30-5 PM  
  
First Congregational Church Food Shelf  
224 N Division St, Stuart  
*Serves:* Stuart, Redfield, Dexter, Menlo  
*Open:* Tuesday - Friday, 9 AM-3 PM

## WAUKEE

Waukee Area Christian Services  
Westview Church (lower level)  
1155 SE Boone Dr, Waukee  
(515) 987-5523  
*Serves:* Waukee school district & Dallas Co.  
*Open:* Monday 2-6 PM, Wednesday &  
Thursday 9 AM-1 PM  
1st & 2nd Saturdays 9-11 AM

## WOODWARD

Woodward Food Bank  
(515) 438-2428  
*Serves:* Woodward residents  
Call to make an appointment.

*This list is subject to change.  
Please call ahead if you have any questions.*

## NOVEMBER 2019 – Mobile Pantries in Dallas County

Sunday	Monday	Tuesday	Wednesday	Thursday	Friday	Saturday
					1	2
3	4	5	6	7	8	9
10	11	12	13	14	15	16
17	18 West DSM Crossroads Church 5:00-6:30pm	19	20	21	22	23
24	25 Adel New Hope Youth Center 5:30-7:30pm	26	27	28	29	30



## DECEMBER 2019 – Mobile Pantries in Dallas County

Sunday	Monday	Tuesday	Wednesday	Thursday	Friday	Saturday
1	2	3	4 Redfield City Hall 5:00-7:00pm	5	6	7
8	9	10	11	12	13	14
15	16 West DSM Crossroads Church 5:00-6:30pm	17	18 Perry Dallas County Hospital 4:00-6:00pm	19	20	21
22	23 Adel New Hope Youth Center 5:30-7:30pm	24	25	26	27	28
29	30	31				





## ~ The Kids' Clothes Closet ~

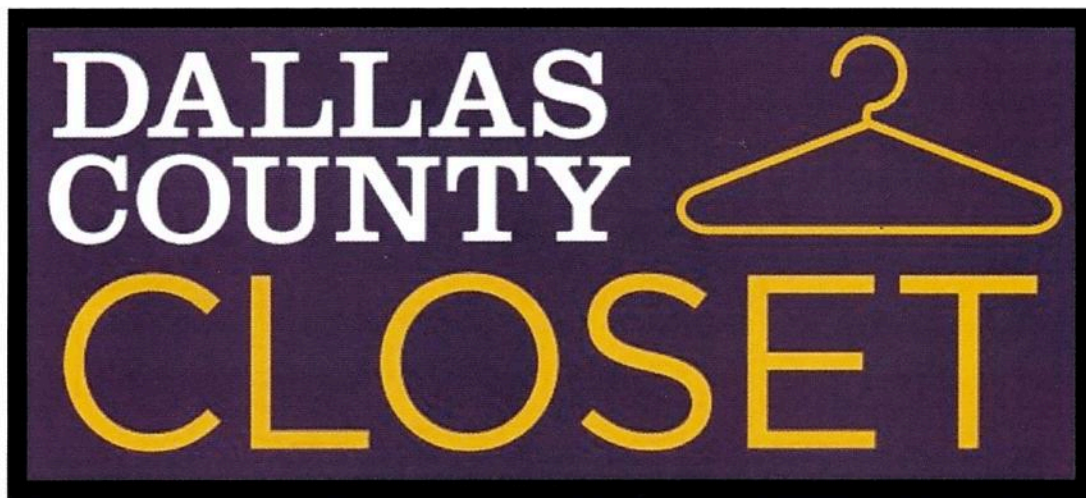
- ◊ Open 1st and 3rd Saturdays of every month
- ◊ 9:00 am—11:00 am
- ◊ Located at the Adel First Christian Church,  
218 N. 9th St., Adel, IA 50003
- ◊ Sponsored by Adel First Christian Church—  
open to all residents of Dallas County

### Each visit, each child may have:

- ◊ 3 outfits
- ◊ 1 underwear & socks (given out the  
1st Sat. of each month only)
- ◊ 1 pair of shoes
- ◊ 1 pair of pajamas
- ◊ 1 coat per season, hat, & gloves
- ◊ 1 pair of boots per season



Please join us for our 9:00am  
services (followed by Sunday  
School at 10:30 am) or Sunday  
evening service at 5:30 pm.



## **October DONATION Hours:**

**Wednesday, October 2 – 7pm-8:30pm**  
**Tuesday, October 8 – 12:30pm-2:30pm**  
**Thursday, October 17 – 3:30-5:30pm**  
**Monday, October 21 - 3pm-5pm**  
**Saturday, October 26 - 8:30am-10am**

## **October SHOPPING Hours:**

**Wednesday, October 2 - 4:30pm-6:30pm**  
**Tuesday, October 8 - 10am-12pm**  
**Thursday, October 17 – 6-8pm**  
**Monday, October 21 - 5:30pm-7:30pm**  
**Saturday, October 26 - 10:30am-12:30pm**  
**Dallas County Closet**  
**43 NE Carefree Lane**

Free clothing is be available to children,  
students, and families in need. Those who  
live within Dallas County are eligible.  
[waukeecommunitycloset@gmail.com](mailto:waukeecommunitycloset@gmail.com)





# Learn PlayGroup



*Facilitated by Parents As Teachers*

**1st Friday of the Month:**

THEME: COLORS

**Sep 6  
Oct 4  
Nov 1  
Dec 6**

THEME: ANIMALS

**Jan 3  
Feb 7  
Mar 6  
Apr 3  
May 1**

**9:30-  
11:00am**

**Waukee Public  
Library**

950 Warrior Lane, Waukee, IA

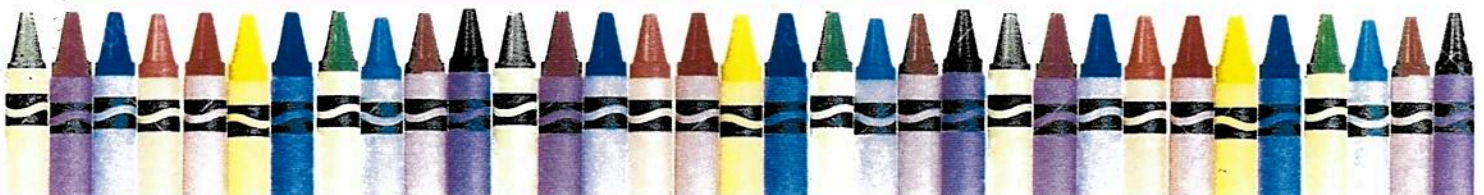
Learn & Playgroup is a parent/child playgroup designed for parents and their children ages birth - five. Through stories and structured activities, both you and your child will learn as you play! You will also have the opportunity to meet other parents and learn about community resources. Did we mention. . . this event series is FREE?



Find our event on Facebook:  
**Learn & Playgroup - Waukee**

Follow us for updates, cancellations, or to ask questions. Spanish and Arabic interpreters are available for attendees upon request.  
For more information, call Rachel at 515-238-8170.

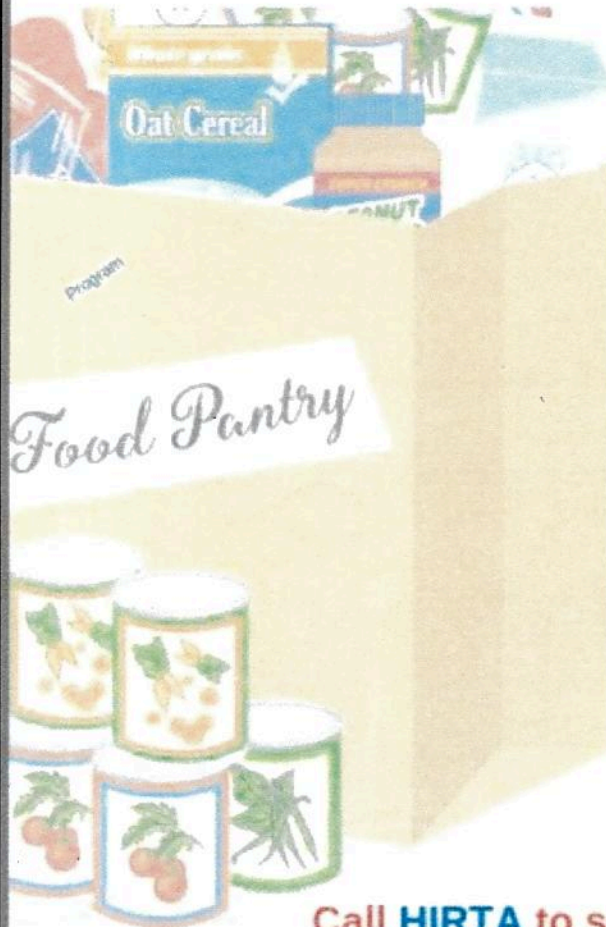
Sponsored by:





**HIRTA**  
**HopeLink**

# **FREE RIDES** to Perry Food Pantry



**Food Pantry Open**  
**Tuesdays: 10:00am**  
**12:30pm**  
**Thursdays: 1:00 -**  
**3:30pm**

Call **HIRTA** to schedule your ride

## **Ride HIRTA**

1-877-686-0029 | [erides@ridehirta.com](mailto:erides@ridehirta.com)  
[www.ridehirta.com](http://www.ridehirta.com) | [f](#) [t](#) [in](#) @ridehirta

Free service made possible in part due to a funding grant from Alliant Energy

October 2019

Hello!

Applications are now being accepted for Dallas County Sheriff's Benevolent Association (DCSBA) *Shop With A Cop* and *Food Basket* programs. These programs are offered annually to Dallas County residents in need during the holiday season.

An online application can be submitted for your family or completed on behalf of a family in your area who is experiencing emotional or financial hardship.

The *Food Basket* and *Shop With A Cop* programs help as many families as possible during the holiday season, especially the children. One hundred percent of donations to the DCSBA stay in Dallas County.

The *Shop With A Cop* program takes about 50 plus children shopping each holiday season to the Wal-Mart in Dallas County. Each child is teamed up with a deputy or police officer, who then helps them pick out Christmas presents for themselves and family members.

Each child receives a specific amount of money to spend on gifts that they choose. At the end of the shopping experience, the gifts are wrapped by volunteers and members of the DCSBA and sent home with the child.

The *Food Basket* program delivers boxes filled with meat, canned food, bread, milk, eggs, potatoes and gift certificates donated by local restaurants and businesses, plus sweets for the children, toys and various other foods and sundries.

Food for the food baskets has been donated for many years by Doug Bruce, the recently retired president of Osmundson Manufacturing in Perry, along with many other generous business owners in Dallas County.

**The deadline for *Food Basket* and *Shop With A Cop* applications are November 25, 2019.**

<https://form.jotform.com/23254952324149>



**DALLAS COUNTY**  
**SHERIFF'S BENEVOLENT**  
HELPING THE FAMILIES OF DALLAS COUNTY SINCE 1995

Dear Dallas County Employees,

Every three years Dallas County Hospital and Dallas County Health Department work together to assess the health of the county. This community health needs assessment (CHNA) further guides health improvement planning for both agencies and any other entity that would like to utilize it. I am writing to ask for your input and participation in this process so we can better understand the needs of our community.

There are several opportunities to provide input. We look forward to learning from you in as many ways as you are able.

1. Complete our survey and share with residents in your community. If you have already completed the survey, you do not need to redo it.

<https://www.surveymonkey.com/r/DallasCHNA2019>

2. Attend our 2019 CHNA Workshop on November 20<sup>th</sup>, 2019 9:00am-12:00pm at the Dallas County Human Services Campus. RSVP to Abigail Chihak, [abigail.chihak@dallascountyiowa.gov](mailto:abigail.chihak@dallascountyiowa.gov), 515-993-1768.

Thank you for your help,  
The Dallas County CHNA Team

**Abigail Chihak, MSW, MPH**

Community Health Administrator  
Dallas County Health Department  
25747 N Avenue Suite C, Adel, Iowa 50003  
(515) 993-1768

[abigail.chihak@dallascountyiowa.gov](mailto:abigail.chihak@dallascountyiowa.gov)

[www.dallascountyiowa.gov/publichealth](http://www.dallascountyiowa.gov/publichealth)

I prefer she/her pronouns. Please tell me yours.



# The Iowa Policy Project

**Solid analysis. Responsible solutions.**

Search Our Site

Enter issue or author

**DONATE NOW**

**OUR BLOG**

**GET UPDATES**



Share

About IPP

Home

Who We Are

Board of Directors

Contacts • Updates

Research

Budget & Taxes

Energy & Environment

Economic Opportunity

Archive 2013-18

Special Topics

Tax Giveaways

Minimum Wage

Iowa JobWatch

The Cost of Living in Iowa

Grading the States

State of Working Iowa

Wage Theft

The Green Bike Tour

Get Energized, Iowa!

Where We've Been

Guest Opinions

Media Interviews

Presentations



Key Links



## The Cost of Living in Iowa

### When Iowa Wages Fall Short, How Do Policy Choices Fill the Gap?

By Peter S. Fisher and Natalie Veldhouse

Tweet

What does it take to get by these days? This seventh edition of *The Cost of Living in Iowa* answers this question, and connects the answer to public policy choices that are in the hands of state and federal lawmakers. As in 2014, 2016 and 2018, we are publishing the report in installments.

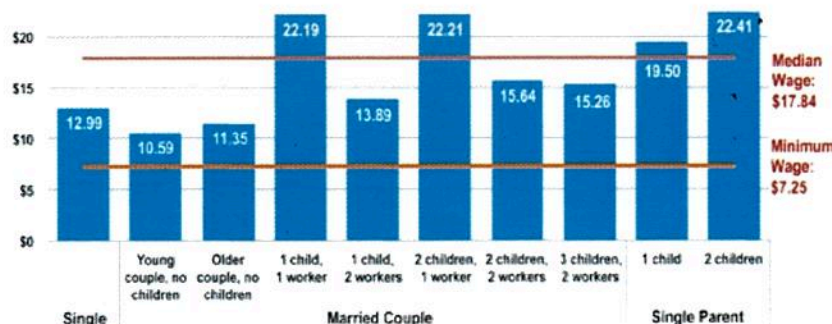
**The first installment focuses** on what Iowans must earn — a living wage, in any county, for 10 family types — to meet a family-supporting, basic-needs household budget. The hourly wage estimate is one that would provide after-tax income sufficient to meet basic needs for a full-time worker. For the first time, both the budgets and the living wage information are available for all 99 counties.

**The report then turns to the analysis of how many** Iowa working households earn enough to actually meet a basic-needs budget (about 1 in 5 overall). This varies by family type — fully 3 in 5 single-parent working families fall short of basic needs on their earnings. These estimates had been provided in a separate report in previous years.

A recurring theme that emerges from this Cost of Living report: The federal poverty guidelines fall woefully short in measuring poverty, if the goal is to show what income is presumed to be enough to help a family get by. Depending on the family type, the basic-needs, self-sufficiency household budget needs to be two to three times higher than what the poverty guidelines claim.

**Later this fall** we will release Part 2 to show how work-support programs work — or do not work — for families to make those ends meet. This will include illustrations of the cliff effects in certain programs, particularly child care assistance, and the way in which the whole range of work supports help provide a pathway to self-sufficiency for working Iowa families.

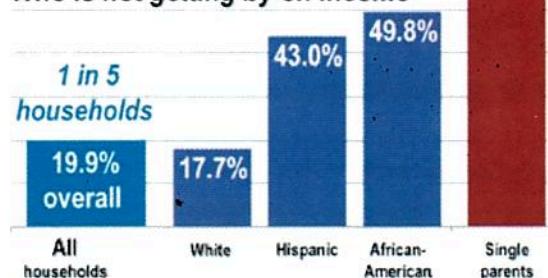
### For Many Iowa Families, It Takes More than the Median Wage Just to Get By



Iowans pay differing amounts for the basic living essentials depending on where they live. A family living in Linn County and a family living in Clay County will face different housing costs, commuting times and health insurance premiums; child care costs will differ as well. **Part 1 of this report** details how much families throughout the state must earn in order to meet their basic needs and underscores the importance of public work support programs for many Iowans, who despite their work efforts, are not able to pay for the most basic living expenses.

### Cost of Living in Iowa 2019

#### Who is not getting by on income



# The Cost of Living in Iowa, 2019 Edition: Basic Family Budgets

## Dallas County

	Single Individual	Single Parent		Married Couple, No Children		Two Working Parents			Two Parents, One Working	
		1 child	2 children	Young	Older	1 child	2 children	3 children	1 child	2 children
Monthly Expenses										
Rent and utilities	\$614	\$910	\$910	\$736	\$736	\$910	\$910	\$1,226	\$910	\$910
Food	269	392	655	493	473	610	785	1039	610	785
Health Care	244	442	512	506	736	723	742	727	583	616
Child care	0	690	741	0	0	690	1046	371	0	0
Clothing & household expenses	225	294	360	294	294	356	444	516	356	444
Transportation	548	528	604	1113	1113	1128	1128	1145	961	961
Monthly total	\$1,900	\$3,256	\$3,783	\$3,142	\$3,352	\$4,417	\$5,054	\$5,024	\$3,420	\$3,715
Annual total expenses	\$22,800	\$39,077	\$45,397	\$37,707	\$40,225	\$53,003	\$60,646	\$60,290	\$41,043	\$44,579
Annual before-tax earnings needed	\$27,275	\$43,799	\$48,185	\$43,997	\$46,827	\$60,763	\$67,317	\$64,592	\$46,080	\$46,027
Less: Income & payroll taxes	(4,474)	(4,963)	(5,118)	(6,290)	(6,602)	(7,760)	(7,054)	(6,412)	(5,038)	(4,510)
Plus: EITC & other credits	-	240	2,330	-	-	-	383	2,110	-	3,061
Net resources	\$22,800	\$39,077	\$45,397	\$37,707	\$40,225	\$53,003	\$60,646	\$60,290	\$41,043	\$44,579
Family supporting hourly wage	\$13.11	\$21.06	\$23.17	\$10.58	\$11.26	\$14.61	\$16.18	\$15.53	\$22.15	\$22.13

## County Comparisons

### Monthly total expenses

	Single Individual	Single Parent		Married Couple, No Children		Two Working Parents			Two Parents, One Working	
		1 child	2 children	Young	Older	1 child	2 children	3 children	1 child	2 children
<b>Dallas County</b>	\$1,900	\$3,256	\$3,783	\$3,142	\$3,352	\$4,417	\$5,054	\$5,024	\$3,420	\$3,715
Rank (1=highest cost)	14	2	11	24	68	4	7	12	16	34
Lowest cost county	\$1,700	\$2,836	\$3,387	\$2,895	\$3,120	\$3,984	\$4,634	\$4,601	\$3,163	\$3,446
Median county	\$1,856	\$2,958	\$3,600	\$3,111	\$3,359	\$4,174	\$4,835	\$4,874	\$3,366	\$3,658
Highest cost county	\$1,989	\$3,268	\$3,960	\$3,239	\$3,497	\$4,478	\$5,142	\$5,216	\$3,547	\$3,856





## IOWA ADOLESCENT HEALTH PROFILE

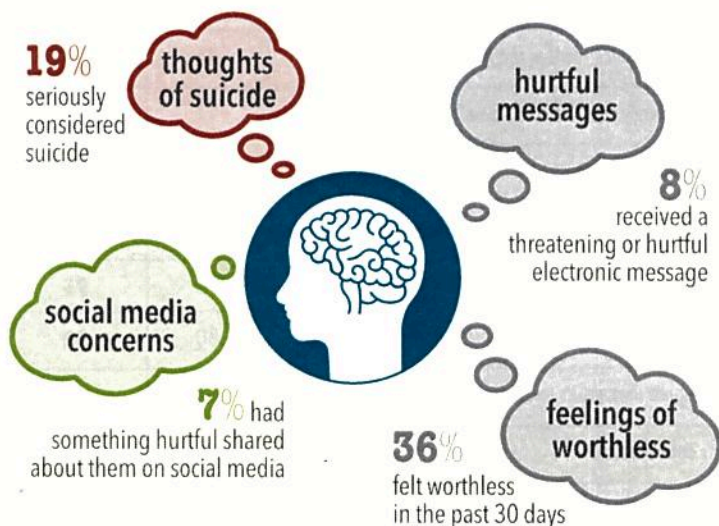


# DALLAS COUNTY

Adolescence\* is a time of rapid change and development. Although adolescence is generally a healthy time of life, some important health and social problems may emerge during these years. The adolescent health profile provides a snapshot of key health indicators impacting our adolescents and those around the state. Our adolescents need foundational supports that help them develop, thrive, prosper and flourish. \*Adolescence is defined as teens ages 15-19 unless otherwise noted.

### MENTAL HEALTH

Faring better / faring worse than state



! Suicide is the second leading cause of death for this age group. Source: 2017 Vital Statistics of Iowa

Source: 2016 Iowa Youth Survey, 11<sup>th</sup> grade only

### PROTECTIVE FACTORS

Faring better / faring worse than state



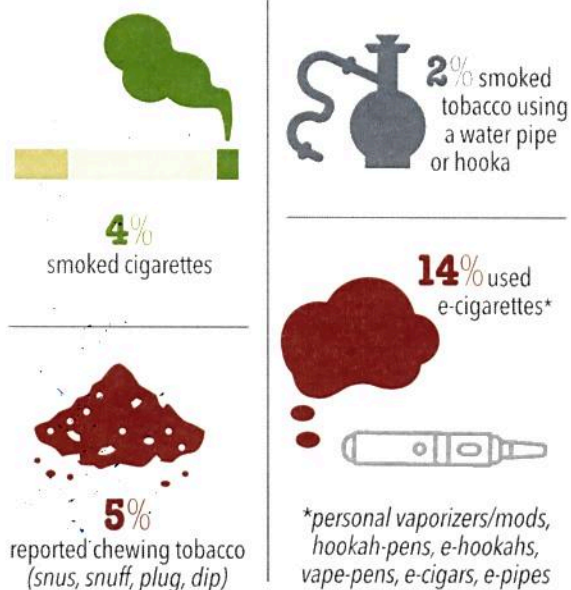
! Adolescents who report they have parental oversight, connectedness, communication, and/or support are less likely to engage in risky behaviors. Adolescent Health: Think, Act, Grow® (TAG) 2018 Playbook

Source: 2016 Iowa Youth Survey, 11<sup>th</sup> grade only

### TOBACCO USE

within the past 30 days...

Faring better / faring worse than state



! Twenty-three percent of 11<sup>th</sup> grade students used e-cigarettes in the past month along with 8 percent of 8<sup>th</sup> graders and 2 percent of 6<sup>th</sup> graders. Source: 2018 Iowa Youth Survey

Source: 2016 Iowa Youth Survey, 11<sup>th</sup> grade only



### THE HIGH FIVE OF HEALTHY ADOLESCENTS

- 1 Positive connections with supportive people
- 2 Safe and secure places to live, learn, work, and play
- 3 Access to high-quality, teen-friendly health care
- 4 Opportunities to engage as learners, leaders, team members, and workers
- 5 Coordinated adolescent- and family-centered services

### SUBSTANCE USE

Faring better / faring worse than state

within the past 30 days...



! Young people who begin drinking before age 15 are four times more likely to meet the criteria for alcohol dependence at some point in their lives. Source: National Institute on Alcohol Abuse and Alcoholism, 02/2017

Source: 2016 Iowa Youth Survey, 11<sup>th</sup> grade only



## POVERTY RATE

Faring better / faring worse than state



**5%**  
of adolescents\*  
live in poverty

\* Adolescents, in this case, is defined as teens ages 12-17.  
Source: 5-year period estimates from the American Community Survey  
Single-year estimates are not available for all 99 counties

## POPULATION

RACE/ETHNICITY	IOWA%	COUNTY%
White	88	90
Black or African American alone	5	2
American Indian and Alaska Native	1	—
Asian	3	5
Native Hawaiian and other Pacific Islander	<1	—
Two or more races	3	3
Hispanic or Latino	9	10

Source: U.S. Census Bureau, 2017 Annual population estimates

## SEXUAL HEALTH

Faring better / faring worse than state

**7**  
Birth rate among  
teens 15-19, per  
1,000 females



**0.8**

Chlamydia,  
cases per 100  
population



Many STDs cause no symptoms. Without testing, individuals may remain undiagnosed, untreated and unaware they are transmitting the infection to others.  
Source: IDPH, STD Program, Chlamydia Fact Sheet

Source: Iowa Department of Public Health  
Vital Records program, 2013-2017

Source: Iowa Department of Public Health, Sexually  
Transmitted Diseases (STD) Program, 2013-2017

## COMPARATIVE STATISTICS

Faring better / faring worse than state

### ADOLESCENT HEALTH STATISTICS

**IOWA %** **COUNTY %**

**Poverty rate** 12 **5**

#### Mental Health

Hurtful things shared about them on social media 8 **7**

Received threatening/hurtful electronic message 8 **8**

Felt worthless during the last 30 days 36 **36**

Seriously considered suicide 17 **19**

#### Protective Factors

Report having positive home environment 89 **90**

Feel safe in neighborhood 93 **95**

Report family involvement in school activities 80 **82**

Agree that adults in community care about teens 76 **75**

#### Tobacco Use

Smoked cigarettes 6 **4**

Used e-cigarettes 9 **14**

Smoked tobacco using a water pipe/hookah 2 **2**

Reported chewing tobacco 4 **5**

#### Substance Use

Drank alcohol (5+ servings in a row within 2 hours) 13 **15**

Used amphetamines (not methamphetamines) 2 **2**

Used prescription medications without prescription 5 **5**

Marijuana use 10 **14**

#### Sexual Health

Birth rate among teens 15-19, per 1,000 females 16 **7**

Chlamydia (cases per 100 population) 1.3 **0.8**



**Invest in our youth.  
Get involved!**

Check out the Think, Act, Grow® (TAG)  
2018 Playbook!

# Family Support Coordinated Intake Project Model

## **Purpose**

The purpose of this handout is to provide an overview of the “model” for which to deliver family support coordinated intake services for the 4 R Kids Early Childhood Iowa Area. This model utilizes resources that are currently in place and is considered a compliment to the preschool enrichment services.

## **Plan for Coordinated Intake Services**

In FY15, a request for proposal (RFP) was issued by the 4 R Kids Early Childhood Iowa Area Board for family support coordinated intake services. The project serves Adair, Dallas, Madison, and Warren County. The major objectives of the project is to:

- increase referrals to Family Support Programs funded by the 4 R Kids Early Childhood Iowa Area Board;
- increase referrals to other local family support programs;
- increase families utilizing Family Support Programs;
- match families with the appropriate Family Support Program.

The role of the coordinated intake service is to:

- be familiar with family support and parent education programs;
- determine which family support services best meets the needs of the family;
- gather family information regarding needs and strengths;
- collaborate with others in the helping profession;
- establish a centralized intake process which includes but not limited to implementing a family assessment process that includes family demographic data;
- develop and implement a program evaluation tool to measure effectiveness.

## **Specific Requirements for Service Delivery**

The chosen contractor is to have the following capabilities:

- Knowledge of early care best practices, current research, and quality standards.
- Knowledge of current early childhood services and available resources within the Adair, Dallas, Madison and Warren County area.
- Ability to understand and be sensitive to specific needs within each community.
- Knowledge and ability to conduct a comprehensive mapping of family support programs.
- Knowledge and ability to collect required state performance measures.
- Ability to provide outreach and marketing efforts for the coordinated intake project.

## **Strategies for Services**

The coordinated intake project coordinates and aligns with the preschool tuition scholarship program. Family demographics are already collected on each family which determines whether a family receives a preschool tuition scholarship. Scholarships are provided to families who are at or below 200% the federal poverty level, which is also one of three requirements for ECI funded family support programs. Families will be automatically referred to a family support program along with the Demographics that have already been collected. It is important to note that release of information has also been obtained before demographics are shared with a family support program.

In addition to the coordinated services with the preschool tuition scholarships, the coordinated intake project will be the central point of contact for referrals from the [Iowa Family Support Network](#) that is statewide and is operated by Every Step.





Preschool Enrichment Project-FY 20 Update

<b>3 yr olds</b>	FY 15	FY 16	FY 17	FY 18	FY 19	FY 20
Adair	12	18	13	18	14	3
Dallas	29	31	29	31	34	26
Madison	19	14	14	15	6	12
Warren	22	13	19	9	9	11
<b>4 yr olds</b>						
Adair	16	15	18	4	15	12
Dallas	36	49	38	44	32	26
Madison	7	12	8	4	9	9
Warren	21	18	11	13	9	3
<b>5 yr olds</b>						
Adair	0	0	2	1	0	2
Dallas	0	0	0	0	0	0
Madison	0	1	0	0	0	0
Warren	2	3	3	3	0	3
<b>Totals</b>	FY 15	FY 16	FY 17	FY 18	FY 19	FY 20
Adair	28	33	34	23	29	17
Dallas	65	80	68	75	66	52
Madison	26	27	23	19	15	21
Warren	45	34	33	25	18	17
<b>Total 4 Counties</b>	<b>169</b>	<b>174</b>	<b>158</b>	<b>142</b>	<b>128</b>	<b>107</b>

Dallas County children served \$7,940.63

FY 20- 1<sup>st</sup> quarter  
Coordinated Intake

38 referrals- 2 enrollments



FY19  
Coordinated Intake

# of Families Referred by Program	# of Families Accepting Service
35 SWCC - PAT	4 Adair
19 PFD - PAT	4 Dallas
11 LSI	0 Madison
DCPH - MCH	0 Warren
65 Total	8 Total

FY18

# of Families Referred by Program	# of Families Accepting Service
34 SWCC - PAT	2 Adair
23 PFD - PAT	2 Dallas
4 LSI	0 Madison
6 DCPH - MCH	0 Warren
67 Total	4 Total

FY 17

# of Families Referred by Program	# of Families Accepting Service
20 SWCC - PAT	0 Adair
77 PFD - PAT	5 Dallas
14 LSI	4 Madison
5 DCPH - MCH	3 Warren
116 Total	12 Total

FY 16

# of Families Referred by Program	# of Families Accepting Service
41 SWCC - PAT	0 Adair
126 PFD - PAT	3 Dallas
21 LSI	2 Madison
6 DCPH - MCH	5 Warren
194 Total	10 Total

## **4 R Kids ECI**

### **Preschool Enrichment Project Model**

#### **Purpose**

The purpose of this handout is to provide an overview of the “model” for which to deliver preschool services for the 4 R Kids Early Childhood Iowa Area. This is a comprehensive preschool services model that allows for maximum service flexibility with the utmost utilization of resources.

#### **3 Year Plan for Preschool Services**

A request for proposal (RFP) was issued by the 4 R Kids Early Childhood Iowa Area Board for coordination and administration of preschool enrichment services. The 4 R Kids ECI Area Board has a three year funding plan, pending performance, funding, and state requirements.

The RFP for preschool services include but limited to, coordination of preschool tuition scholarships as well as administration and coordination of other supportive services such as dental and lead screenings, quality improvement efforts, and professional development and other services identified by the 4 R Kids ECI Area Board. The chosen contractor for the preschool enrichment services is to provide staffing and the infrastructure to accomplish the preschool service goals of the Board.

#### **Specific Requirements for Service Delivery**

The chosen contractor is to have the following capabilities:

- Ability to cash flow preschool enrichment services as this is a draw down system.
- Knowledge of early care best practices, current research, and quality standards.
- Knowledge of current early childhood services and available resources within the Adair, Dallas, Madison and Warren County area.
- Capacity to sub-contract with agencies to provide supportive services, if needed.
- Ability to administer preschool scholarships to multiple vendors.
- Ability to understand and be sensitive to specific needs within each community.
- Knowledge and ability to conduct a comprehensive mapping of preschools.
- Knowledge and ability to collect required state performance measures.
- Ability to provide outreach and marketing efforts for the preschool enrichment project

#### **4 R Kids ECI Area Board**

The 4 R Kids ECI Board makes specific funding allocations for preschool tuition and supportive services (dental and lead screenings, quality improvement, and professional development, etc), based on community input as well as subject matter experts such the current contractor of the preschool enrichment project. It is to be noted that preschool tuition is of first priority with other supportive services as a second priority.

The preschool enrichment project administers the supportive services either directly or through subcontracts. The preschool enrichment project may subcontract with other agencies for services such as dental and lead screenings. But, the quality-improvement mini grant process may be administered by the staff of the preschool enrichment project. Quality improvement mini grants have quality improvement criteria, expectations of improvement in the early care setting and have written agreements signed with local preschools, it is important to note that written agreements with qualifying preschools can be as many as 70 preschools in the service area. Professional development mini grants may operate similar as to the quality improvement grants.

#### **Collaboration and Communication**

The preschool enrichment project collaborates and communicates with the 4 R Kids Executive Director on regular basis. This collaboration and open communication provides for opportunities for flexibility to meet the needs of families. The 4 R Kids ECI Area Board makes the decision on how funds are allocated and/or reallocated among preschool services, the metrics and percentage of funds used is not a reflection of contractor management, rather it is a measurement of funds availability in a category. While the contractor may consult with Executive Director and Board as to reallocation of funds during the year based on their first hand knowledge, the contractor responsibility is to monitor fund allocations appropriately as per board direction. In addition, the percent of funds to budget is not a metric of contractor performance; it is a metric of funds usage.

# **Community Meeting**

## **"Preparing for the Legislative Session"**

**December 17, 2019**

**12:00 -1:00 P.M.**

**Wells Fargo**

**515 N. Jefferson Way, 2nd Floor Conference room**

**Indianola Iowa 50125**

**(enter the north doors)**

Dave Stone, Advocacy Officer with United Way of Central Iowa will provide participants with advocacy information as well as hot topics of interest for the legislative session.

Sponsored by



Early Childhood Iowa

A light lunch will be provided, please RSVP by  
December 13, 2019 by clicking [here](#).

For more information contact

Debra Schrader, ECI Director at [4rkidseci@gmail.com](mailto:4rkidseci@gmail.com) or 641-344-2250